

STRUCTURE CABLING

UNSHIELDED PATCH PANEL

VP-7324-C5E/C6



- 24 x Unshielded RJ45 jack
- LSA or 110 Block
- Pin 6 μ to 50 μ gold plated

VP-7424-C5E/C6



- 24 x Unshielded RJ45 jack
- LSA or 110 Block
- Pin 6 μ to 50 μ gold plated

VP-7312-C5E/C6



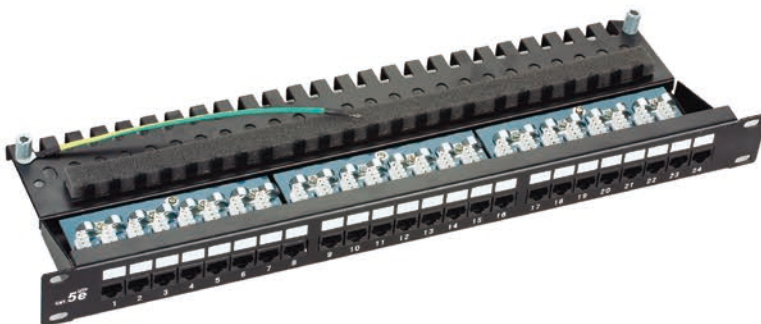
- 12 x Unshielded RJ45 jack
- LSA or 110 Block
- Bracket Installation

VP-7412-C5E/C6



- 12 x Unshielded RJ45 jack
- LSA or 110 Block
- Bracket Installation

VP-7224-C5E/C6



- 24 x Unshielded RJ45 jack
- LSA Block With Color Label
- Integral Rear Cable Management

- 110 Block, LSA Block, Dual Block
- Category 5E component certification
- Suitable for Awg22-Awg26
- LSA /110 tool necessary
- Meet or exceed Cat.5E EIA/TIA568B.2-1 Standard
- Phosphor bronze with 6-50 μ gold plated
- Metal sheet: Corrosion resistant steel
- Plastic: fire self-extinguish high impact plastic