

# STRUCTURE CABLING

## 0.5U PATCH PANEL

VP-8124S-C6A



- 0.5U STP CAT6A PATCH PANEL 24 PORT

VP-8024S-C6/C5E



- 0.5U STP CAT6 PATCH PANEL 24 PORT

VP-8224S-C6A



- 0.5U STP CAT6A PATCH PANEL 24 PORT EMPTY

VP-8324S-C6A



- 0.5U STP CAT6A PATCH PANEL 24 PORT EMPTY

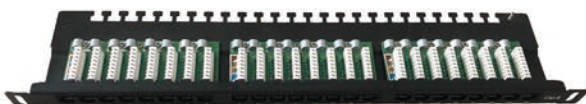
VP-8624-C6A



- 0.5U UTP CAT6A PATCH PANEL 24 PORT

- Electrical:  
Current Rating:1.5 Amps  
Insulation Resistance:500 M ohms (MIN)  
Contact Resistance:20m ohms (MAX)  
DC RESistance:0.1 ohm MAX

VP-8724-C6A



- 0.5U UTP CAT6A PATCH PANEL 24 PORT

- Mechanical Specification:  
IDC Punch Down Cycle:>250 mating cycles  
RJ45 Insertion Life:>750 mating cycles  
IDC Accept:22-26 AWG Solid Wire

- Material:  
Panel:1.5mm thickness metallic panel/RAL9005  
Spring:Phosphor Bronze with gold-painted (3U" ~50U")  
over nickel-painted.  
IDC Contact:Phosphor Bronze with Tin-painted  
Plastic:PC