

STRUCTURE CABLING

FACE PLATE SYSTEM

VK-4315-45C3



- 45*22.5mm
- Single Faceplate
- Wire Scheme: T568A/B

VK-4315-45C5E



- 45*22.5mm
- Single Faceplate
- IDC Accept: 22-26 AWG

VK-4315-45C6



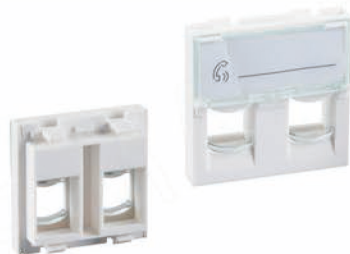
- 45*22.5mm
- RJ45 Single Faceplate
- IDC Accept: 22-26 AWG

VK-4316-45-1P



- 45*45mm
- 1 port RJ45 Faceplate
- Color: Ivory/White

VK-4316-45-2P



- 45*45mm
- 2 ports RJ45 Faceplate
- Color: Ivory/White

VK-4316-45C3



- 45*45mm
- 1 port RJ11 Faceplate
- IDC Accept: 22-26 AWG

VK-4316-45C5E



- 45*45mm
- 1 port RJ45 Single Module Faceplate
- Wire Scheme: T568A/B

VK-4316-45C6



- 45*45mm
- RJ45 Single Module Faceplate
- Wire Scheme: T568A/B

Technical Details

- 45*45mm、45*22.5mm Faceplate Jack
- Material: Fireproof PC.UL94V-0
- Color.pure white
- LSA IDC
- With mafched frame&back box